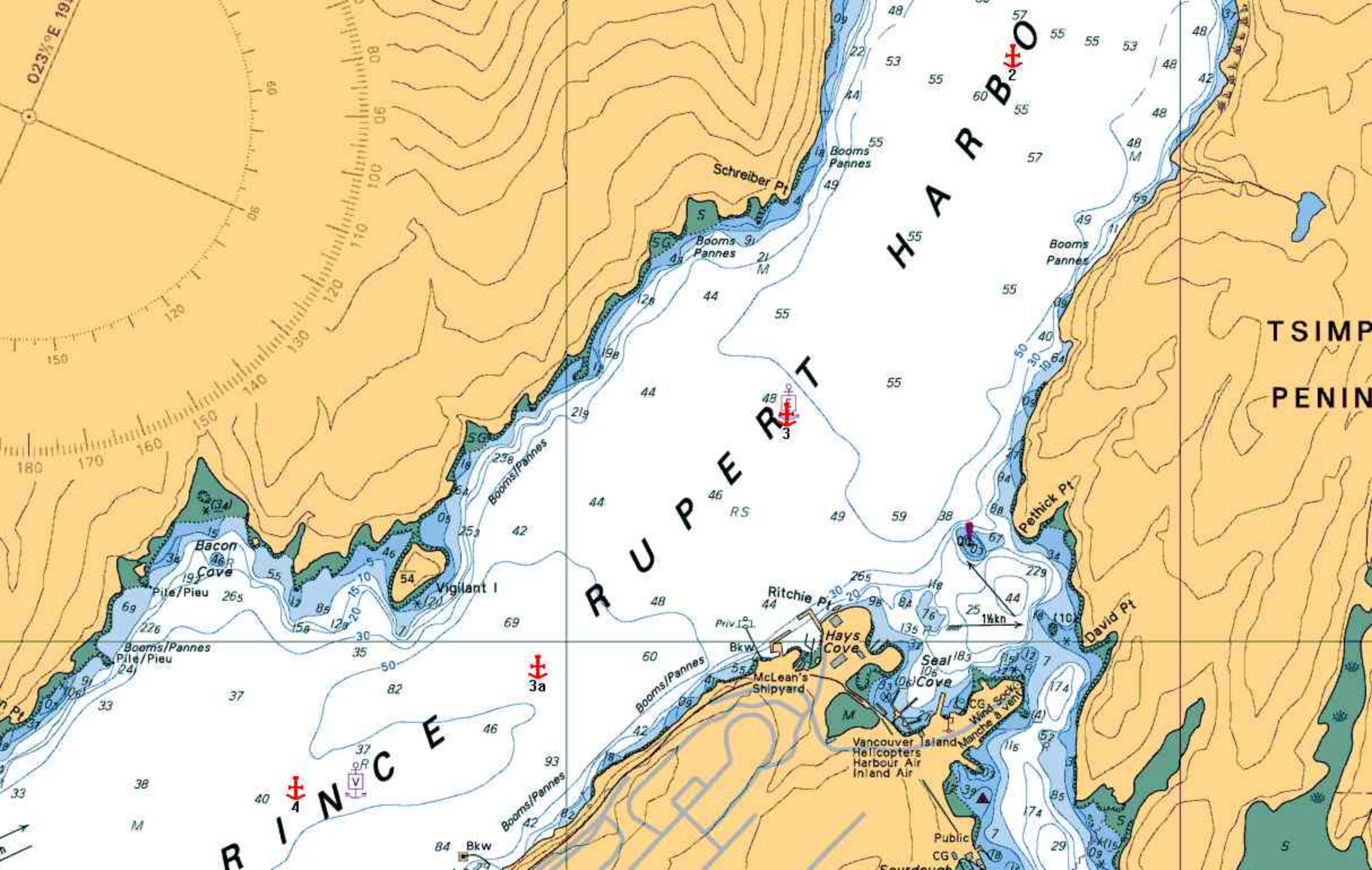
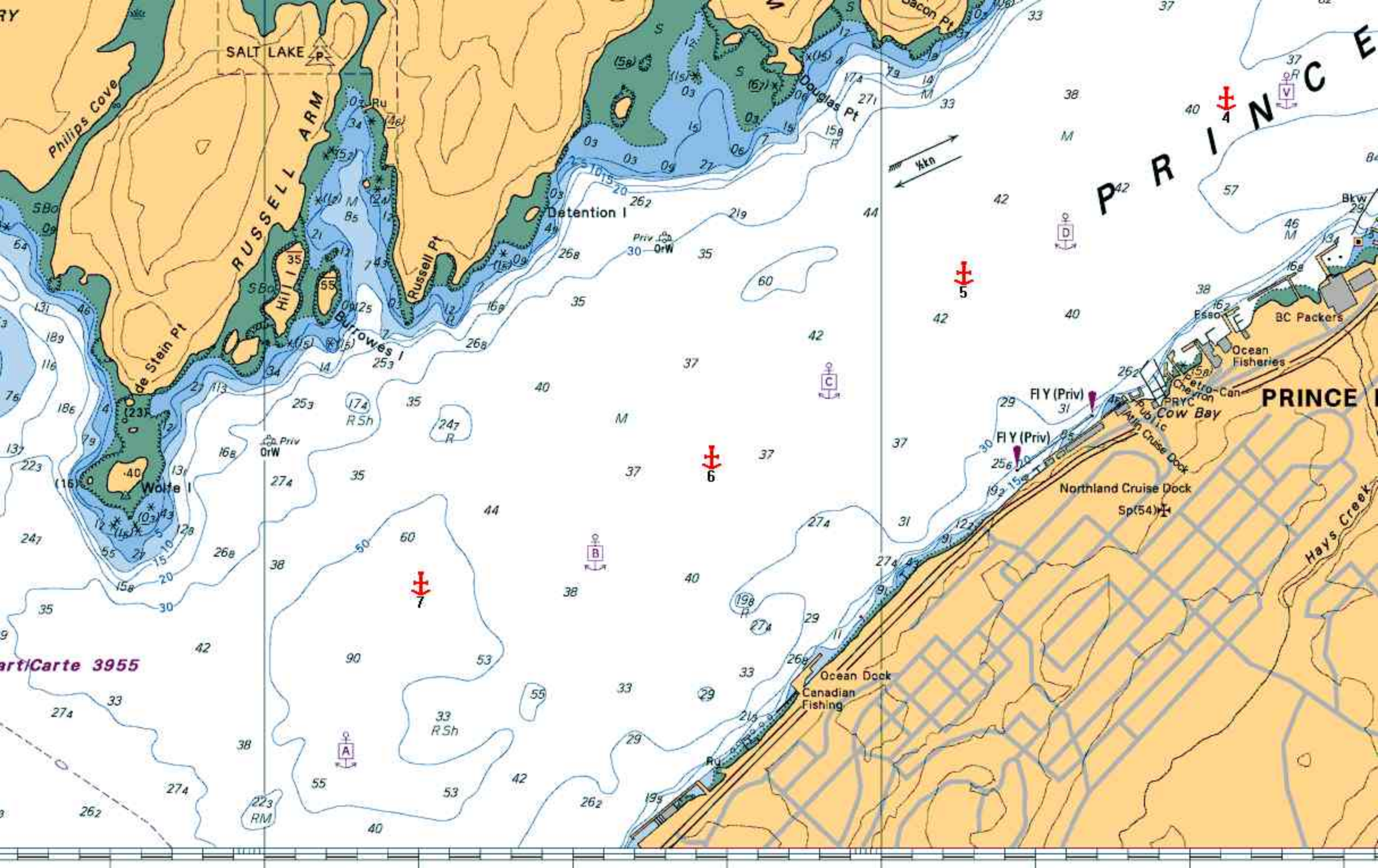
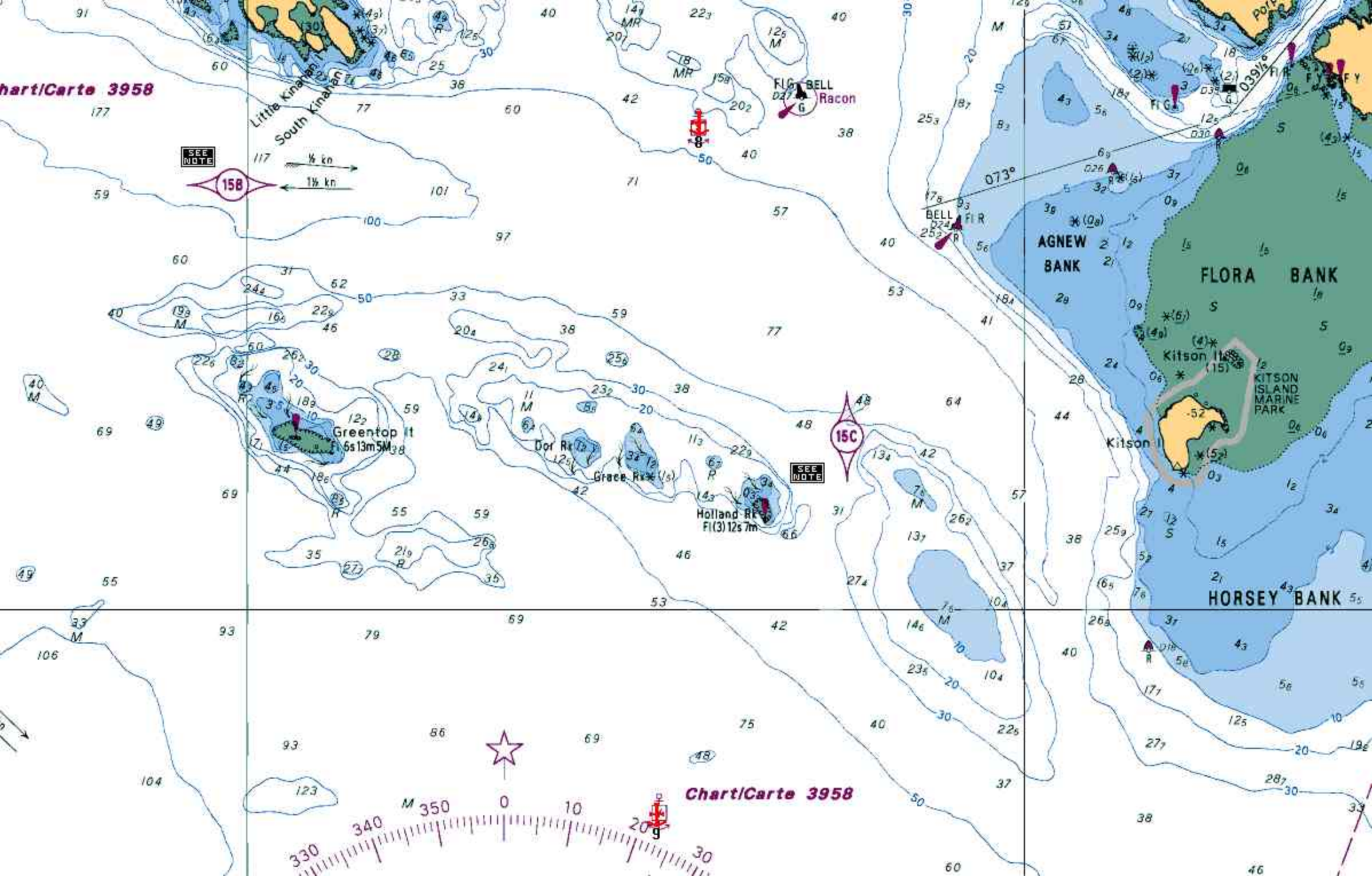


Geo. Reference (chart number)	Old Ref.	New #	Anchorage Position		Maximum LOA (m)	Swing circle Radius (m)
			DD MM.MM	DDD MM.MM		
Inner Harbour (3964)	n/a	1*	*Not allocated (n/a)		n/a	n/a
	NEW	2	54 21.11 N	130 16.54 W	225	550
	E	3	54 20.43 N	130 17.28 W	225	550
	NEW	3a	54 19.95 N	130 18.09 W	105	375
	V	4	54 19.72 N	130 18.88 W	225	550
	D	5	54 19.39 N	130 19.73 W	225	550
	C	6	54 19.04 N	130 20.55 W	250	600
	B	7	54 18.80 N	130 21.49 W	250	600
Ridley I. (3956)	X	8	54 11.83 N	130 22.1 W	270	650
	Y	9	54 9.22 N	130 22.37 W	350	725
	NEW	10	54 7.87 N	130 21.15 W	350	725
Digby I. (3957)	NEW	11	54 14.70 N	130 26.70 W	270	600
	NEW	12	54 15.12 N	130 27.77 W	270	600
	NEW	13	54 15.68 N	130 28.77 W	270	600
	NEW	14	54 16.40 N	130 29.77 W	270	600
Rachael I. (3956)	NEW	15	54 11.75 N	130 31.00 W	270	650
	NEW	16	54 12.42 N	130 31.25 W	270	650
	NEW	17	54 12.68 N	130 32.38 W	270	650
Lucy I. (3957)	NEW	18	54 16.60 N	130 35.72 W	325	700
	NEW	19	54 15.98 N	130 36.52 W	325	700
	12	20	54 15.43 N	130 37.60 W	325	700
	NEW	21	54 15.39 N	130 38.95 W	325	700
	NEW	22	54 16.11 N	130 39.10 W	325	700
	11	23	54 16.80 N	130 38.72 W	325	700
	NEW	24	54 7.35 N	130 33.15 W	350	725
Stephens I. (3956)	5	25	54 5.76 N	130 33.92 W	325	700
	6	26	54 6.36 N	130 34.58 W	270	600
	7	27	54 6.76 N	130 35.53 W	325	650
	NEW	28	54 7.25 N	130 36.30 W	270	600
	8	29	54 7.90 N	130 36.73 W	350	675
	9	30	54 8.80 N	130 37.50 W	350	675
	10	31	54 9.60 N	130 38.40 W	350	675





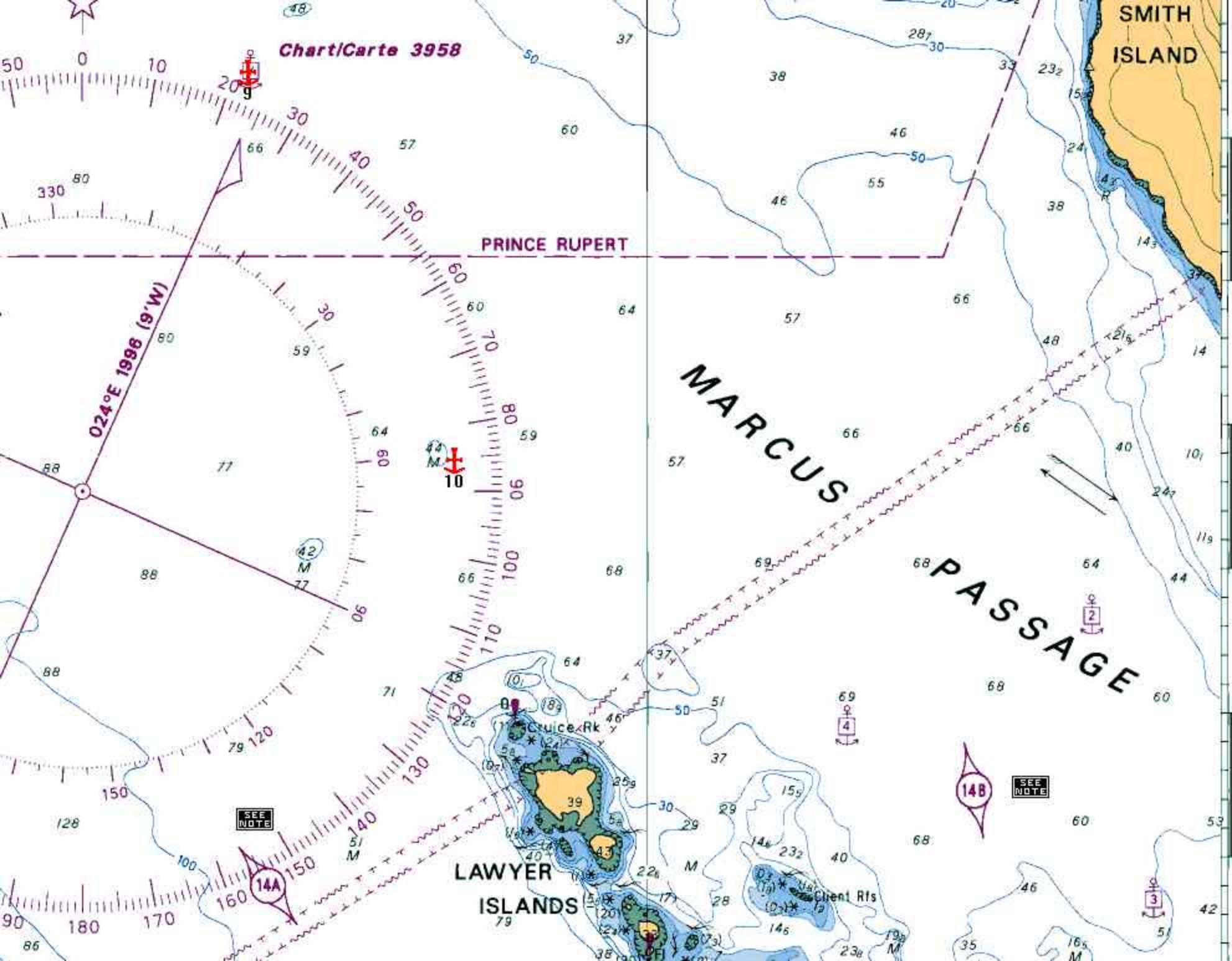
Chart/Carte 3958



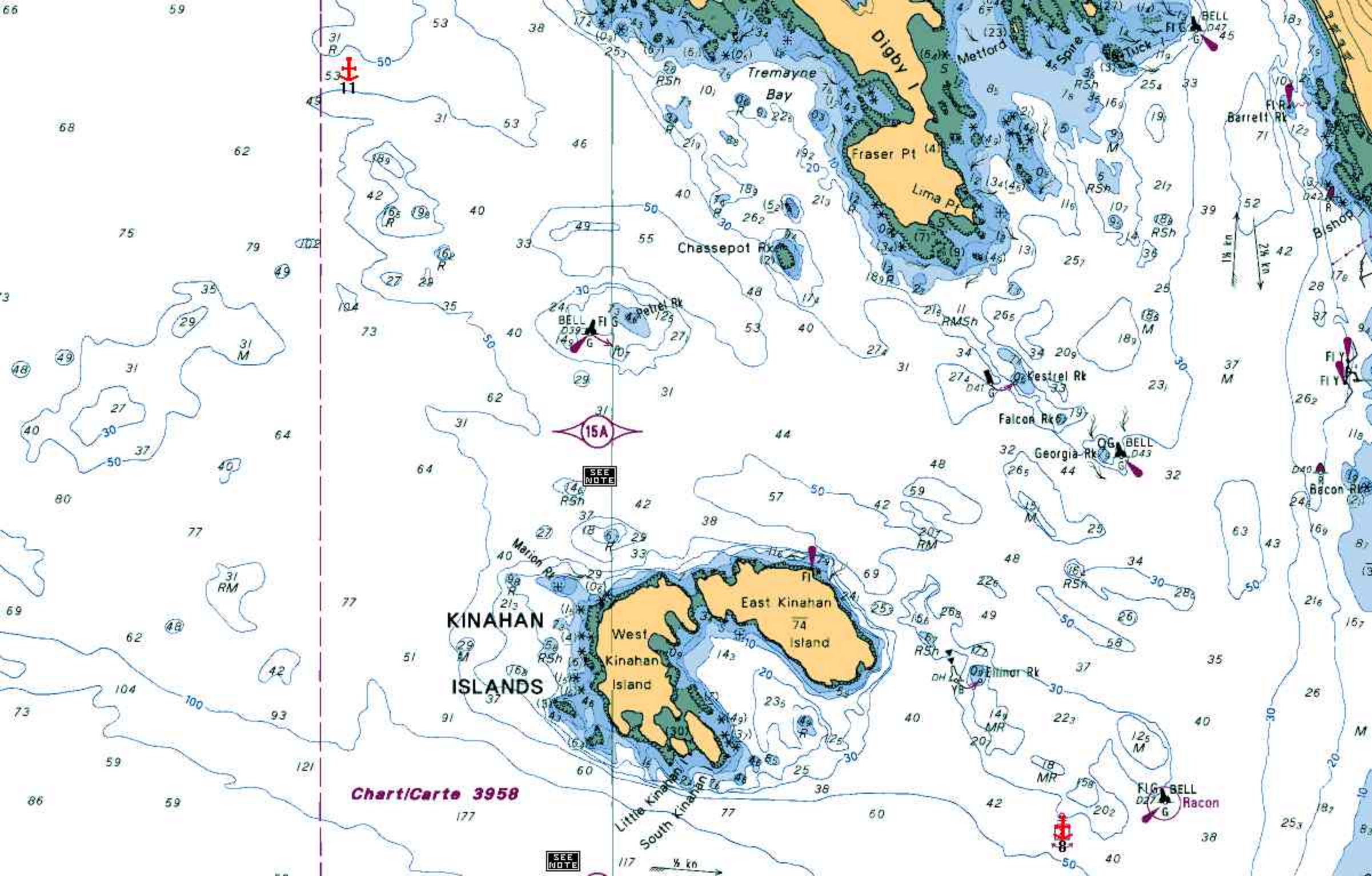
SEE NOTE  
158  
1/4 kn  
1 1/2 kn

SEE NOTE

Chart/Carte 3958



9'  
8'  
7'  
Adjoining Chart 3947  
Carte adjacente



Chart/Carre 3958

SEE NOTE

15A

SEE NOTE

KINAHAN ISLANDS

West Kinahan Island  
East Kinahan Island

Digby I

Tremayne Bay

Fraser Pt  
Lima Pt

Chassepot Rk

BELL Pt

East Kinahan Island

West Kinahan Island

Little Kinahan  
South Kinahan

Kestrel Rk

Falcon Rk

Georgia Rk

Ellimor Rk

BELL Racon

Barrett Rk

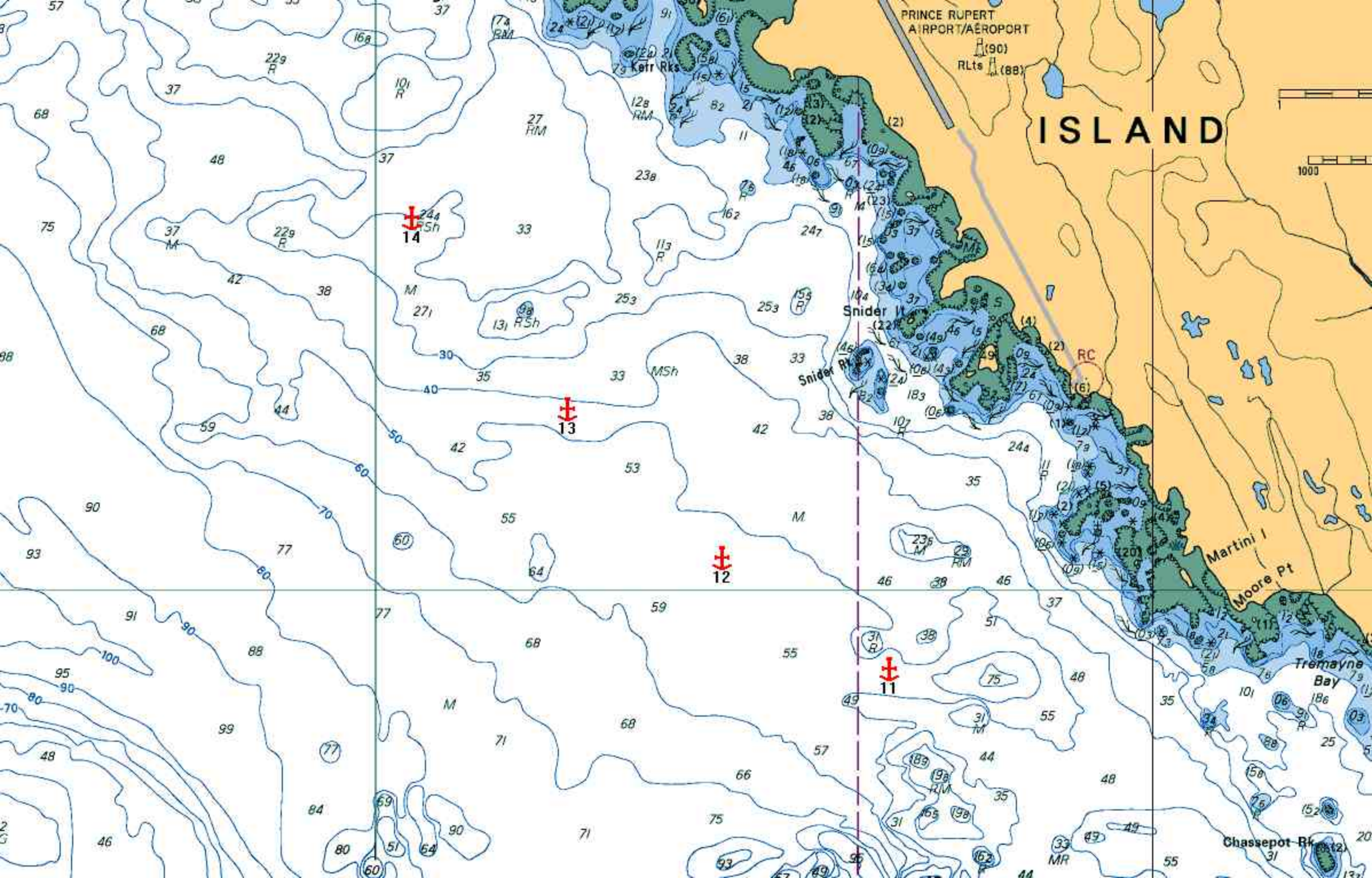
Bishop

FI Y

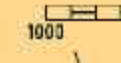
Bacon Rk

SEE NOTE

1/2 kn



# ISLAND



PRINCE RUPERT  
AIRPORT/AÉROPORT  
H (90)  
RLTs H (88)

Snider I

Martini I

Moore Pt

Tremayne Bay

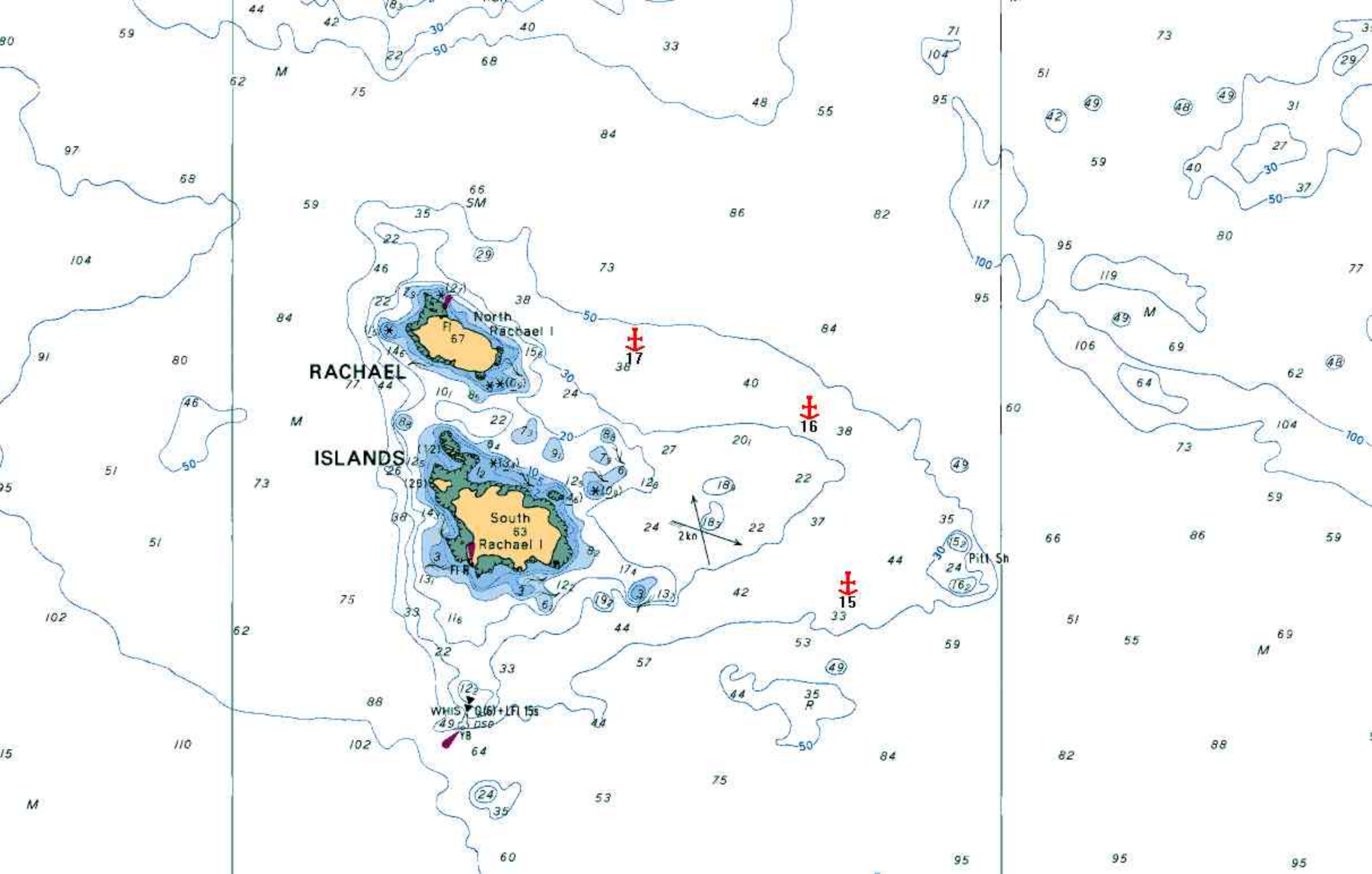
Chassepot Rk

244  
Sh  
14

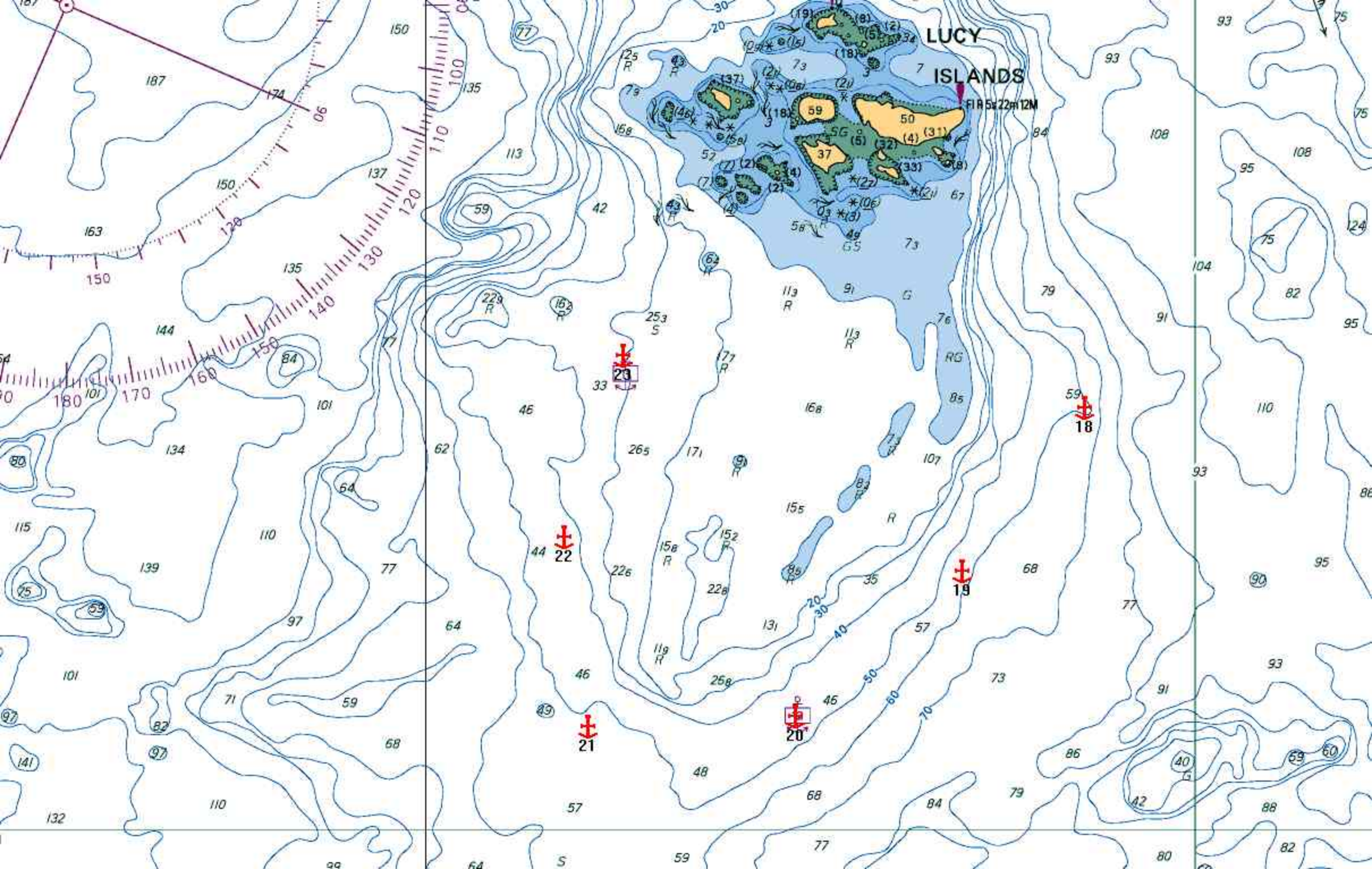
13

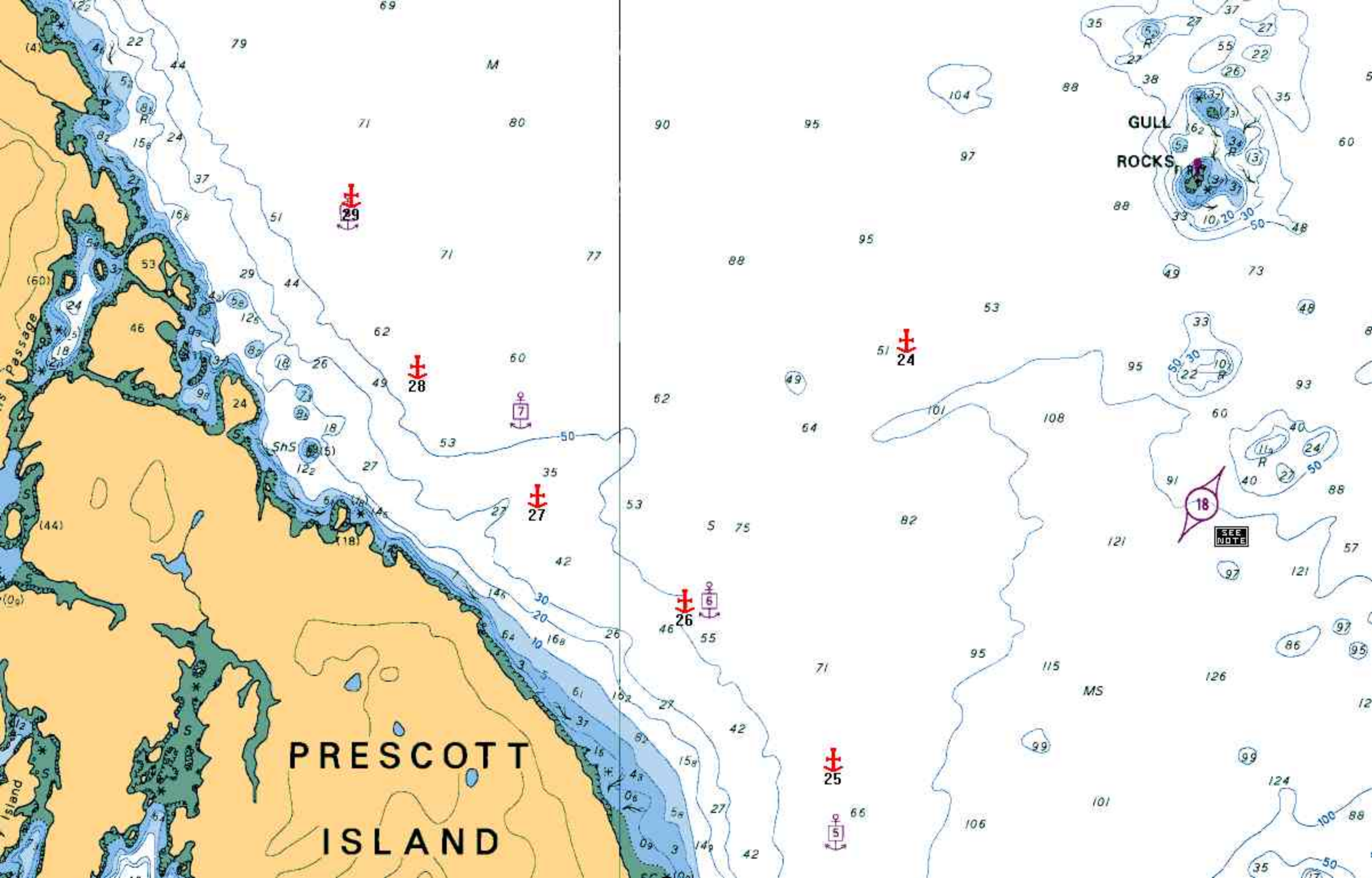
12

11









PRESCOTT  
ISLAND

GULL  
ROCKS

SEE  
NOTE



